

Cubetas / Carros



cubeta GN1/1 (530x325mm.)
(altura 20,40,65,100,150 mm)



cubeta GN1/2 40 (325x265 mm.)
(altura 40,65,100,150 mm.)



cubeta GN1/3 (325x176 mm.)
(65,100,150*especial vitrinas)



Cub. GN1/4 (265x162)
(altura 65,100,150)



Cub GN1/6 (176x162)
(altura 65,100,150)



Cub. GN1/9 (176x108)
(altura 65,100 mm.)



cubeta GN1/1 perforada (530x325)
(40,65,100 mm.)



presentador de cubetas
1/2, 1/3, 1/6 (78x78x63)



presentador de cubetas
1/3 1/6 1/9



carro polipropileno
103x49x95 3 estantes



carro inox 2 est. 83x51
carro inox 3 est. 86x51
carro inox 3 est. 90x50
carro inox 3 est. 100x60



carro 15 guías GN 1/1
630x445x1720

Hermeticos / Cubetas nevera



GN 1/6 2,6L h15



GN 1/6 1,7L h10



GN 1/9 1L h10



GN 1/9 0,6L h 6,5



GN 1/3 6L h15



GN 1/3 4L h10



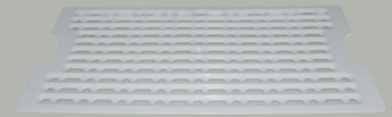
GN 1/3 2,5L h6,5



GN 1/2 12,5L h20



GN 1/2 10L h15



rejilla para GN 1/2



GN 1/2 6,5L h10



rejilla para GN 1/1



GN 1/1 28L h20



GN 1/1 21L h15



GN 1/1 13L h10



cubeta 3L (35x23)
cubeta 6L (43x28)
cubeta 8L (49x33)
cubeta 12L (54x38)

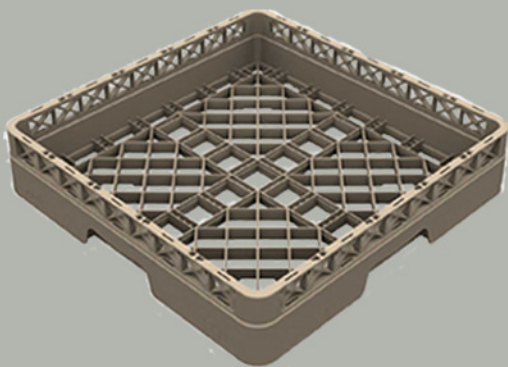


C. charcut. 4L (33x24)
C. charcut. 21 L (48x33)
rejilla para cubeta

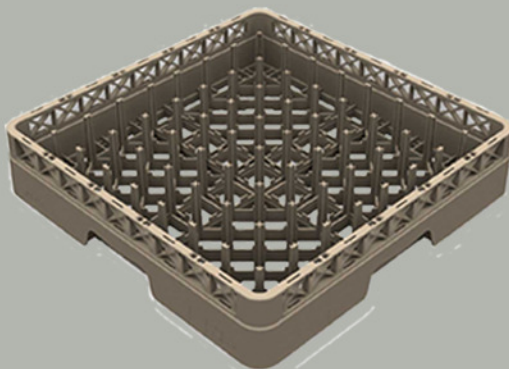


bote herm. 1,5L
c/tapon

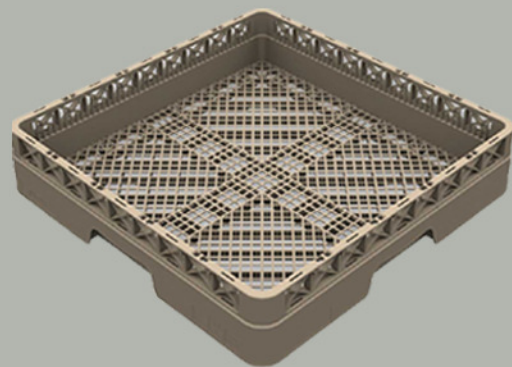
Cestas lavado / Estanterias



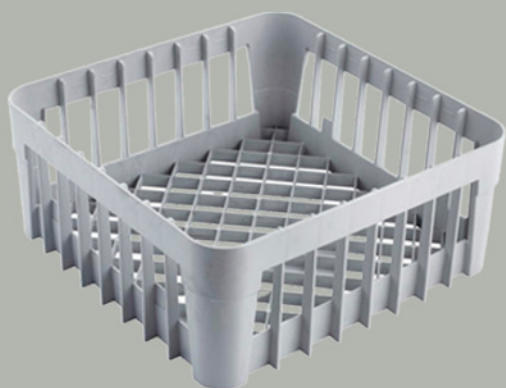
cesta 50x50 universal



cesta 50x50 platos



cesta 50x50 cubiertos



Cesta lavavasos 40x40 cm.



cestillo cubiertos 8 c.



C. cubiertos cuadrado



C. cubiertos redondo



Estanterias modulares fabricadas con estructura de aluminio y estantes en polipropileno